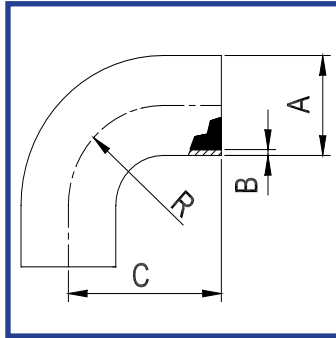


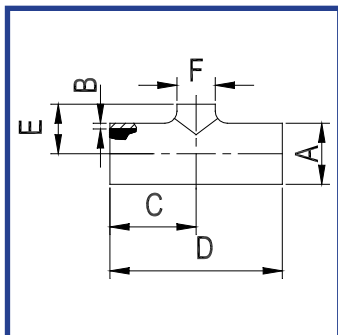
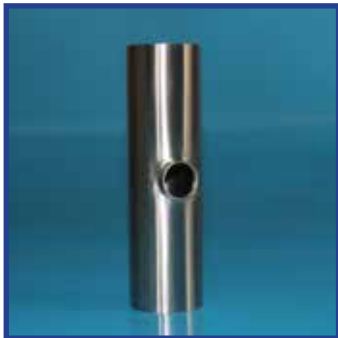
90 DEG 1 D BEND 304,304L,316,316L



STOCK CODE	SIZE	A (MM)	B (MM)	C (MM)	R (MM)
901D16-G1BP6	1"	25.4	1.5	55.0	32.0
901D16-G112BP6	1½"	38.1	1.5	70.0	45.0
901D16-G2BP6	2"	50.8	1.5	82.0	58.0
901D212-BP6	2½"	63.5	1.5	105.0	70.0
901D3-BP6	3"	76.2	1.6	110.0	76.0
901D4-BP6	4"	101.6	2.11	173.5	152.4

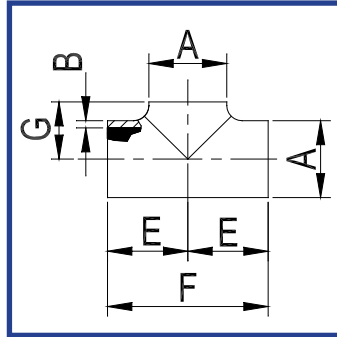
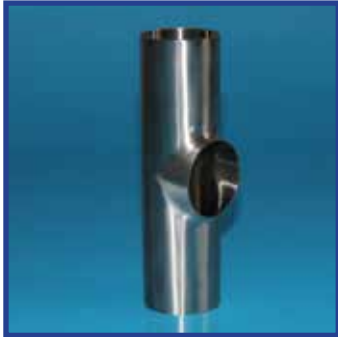
**BS4825 PART 2 HYGIENIC
PULLED REDUCING TEES**

AS PULLED REDUCING TEES 304,304L,316,316L

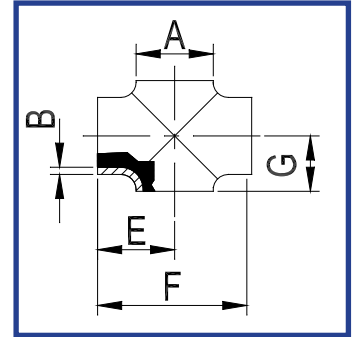


STOCK CODE	SIZE	A (MM)	B (MM)	C (MM)	D (MM)	E (MM)	F (MM)
N/A	1½" x 1"	38.1	1.6	63.5	127	22	25.4
N/A	2" x 1"	50.8	1.6	88.5	177	29	25.4
N/A	2" x 1½"	50.8	1.6	88.5	177	29	38.1
N/A	2½" x 1"	63.5	1.6	113.5	227	35	25.4
N/A	2½" x 1½"	63.5	1.6	113.5	227	35	38.1
N/A	2½" x 2"	63.5	1.6	113.5	227	35	50.8
N/A	3" x 1½"	76.2	1.6	133.5	267	41	38.1
N/A	3" x 2"	76.2	1.6	133.5	267	41	50.8
N/A	3" x 2½"	76.2	1.6	133.5	267	41	63.5
N/A	4" x 2"	101.6	2.1	173.5	347	55	50.8
N/A	4" x 2½"	101.6	2.1	173.5	347	55	63.5
N/A	4" x 3"	101.6	2.1	173.5	347	55	76.2

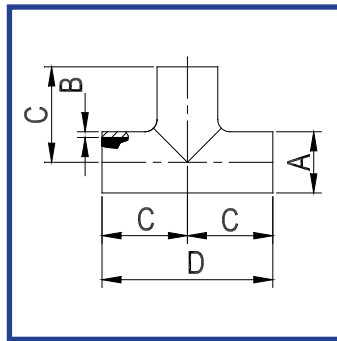
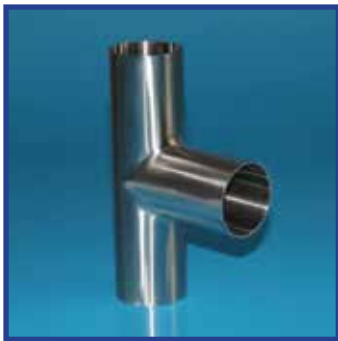
BS PULLED TEE 304,304L,316,316L



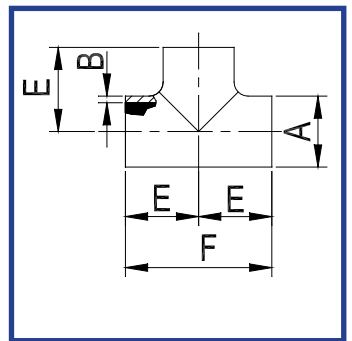
BS PULLED/ EQUAL CROSS 304,304L,316,316L



**LONG EQUAL TEE 304,304L,316,316L
(Note:- 1"-4" TO BS4825)**



SHORT EQUAL TEE 304,304L,316,316L



STOCK CODE	SIZE	A (MM)	B (MM)	C (MM)	D (MM)	E (MM)	F (MM)	G (MM)
N/A	½"	12.7	1.65	47.63	95.25	-	-	-
N/A	¾"	19.0	1.65	50.8	101.6	-	-	-
N/A	1"	25.4	1.65	65	130	43.5	87	14.2
N/A	1½"	38.1	1.65	85	170	63.5	127	21.6
N/A	2"	50.8	1.65	110	220	88.5	177	29.1
N/A	2½"	63.5	1.65	135	270	113.5	227	35.3
N/A	3"	76.2	1.65	155	310	133.5	267	41.4
N/A	4"	101.6	2.11	195	390	173.5	347	54.7